

DAWN JIG & FIXTURE CLAMPS - CUSTOM FIT YOUR OWN CLAMPING REQUIREMENT

These heavy duty clamps provide the strength and durability required in high production industrial applications such as milling and welding fixtures in the automobile industry, sealing moulds etc. Forged steel components are accurately machined and equipped with hardened bushings and pivot pins. The basic toggle action mechanism can be readily adapted to a wide variety of applications by adding a handle and a suitable hold-down bar. The designer can position the base, clamp arm and handle and weld them to suit the application. The extremely wide angle of operations gives maximum access for loading and unloading of workpieces. Two mounting versions are available: the B series with a swivel mounting base and the LB series with 2 long mounting plates

Series - 501, 503, 505, 506, 508

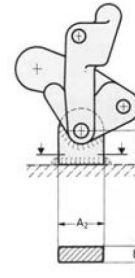


Model 505 - MB

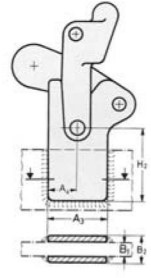


Model 505 - MLB

Application Example



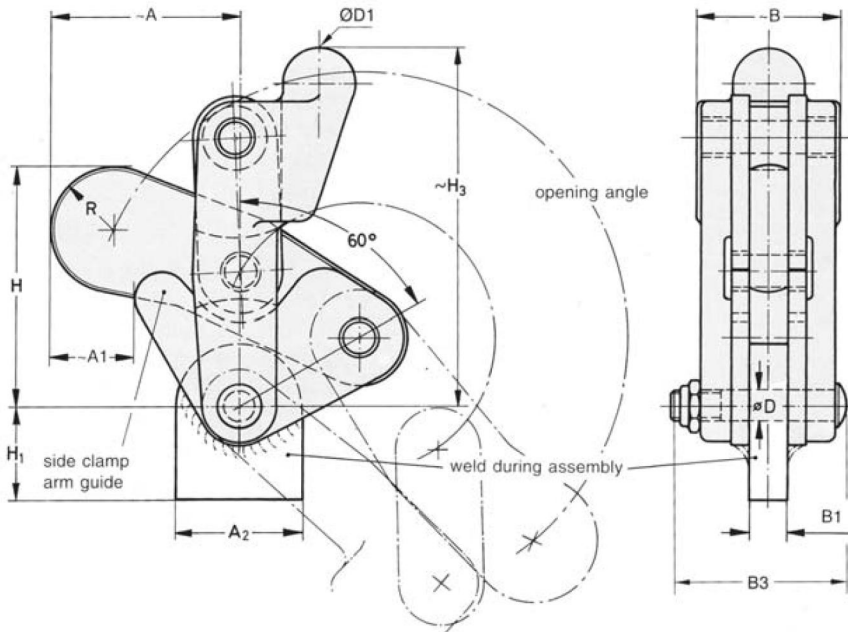
with swivel mounting base



with 2 mounting plates

models **501-B**
503-MB
505-MB
506-MB
508-B

models **501-LB**
503-MLB
505-MLB
506-MLB



| MODEL NO. | ~A | ~A1 | A2 | A3 | A4 | ~B | B1 | B2 | B3 | ØD | ØD1 | H | H1 | H2 | ~H3 | R | OPENING ANGLE | HOLDING CAPACITY | WEIGHT (KGS) |
|-----------|------|------|------|------|------|------|------|------|----|------|-----|------|------|------|------|------|---------------|------------------|--------------|
| 501-B | 28.5 | 14.5 | 19 | - | - | 28 | 6.4 | - | 28 | 4.7 | 12 | 28 | 20 | - | 56 | 9.5 | 200° | 250 | 0.18 |
| 501-LB | 28.5 | 14.5 | - | 28.5 | 14 | 28 | 6.4 | 12.8 | 28 | 4.7 | 12 | 28 | - | 33.5 | 56 | 9.5 | 200° | 250 | 0.2 |
| 503-MB | 39.5 | 13 | 28.5 | - | - | 38.5 | 10 | - | 45 | 7.9 | 18 | 51 | 20 | - | 88.5 | 13.5 | 200° | 700 | 0.7 |
| 503-MLB | 39.5 | 13 | - | 44.5 | 19 | 38.5 | 10 | 19.6 | 45 | 7.9 | 18 | 51 | - | 50 | 88.5 | 13.5 | 200° | 700 | 0.8 |
| 505-MB | 56.5 | 25 | 35 | - | - | 48 | 12.3 | - | 54 | 9.5 | 22 | 71.5 | 28 | - | 110 | 18 | 200° | 1100 | 1.4 |
| 505-MLB | 56.5 | 29 | - | 53 | 27.5 | 48 | 12.3 | 21.9 | 54 | 9.5 | 22 | 71.5 | - | 63.5 | 110 | 18 | 200° | 1100 | 1.5 |
| 506-MB | 72 | 32.5 | 51 | - | - | 60 | 16 | - | 67 | 12.7 | 28 | 87.5 | 33 | - | 135 | 21 | 200° | 2250 | 2.6 |
| 506-MLB | 72 | 35 | - | 65.5 | 37 | 60 | 16 | 28.8 | 67 | 12.7 | 28 | 87.5 | - | 76 | 135 | 21 | 200° | 2250 | 2.8 |
| 508-B | 66 | 17 | 70 | - | - | 69 | 19 | - | 79 | 15.8 | 35 | 102 | 33.5 | - | 174 | 20 | 215° | 3400 | 4.2 |